



H.265



SAFR SCAN

Facial Recognition Bullet Camera

Facial Recognition at the Edge

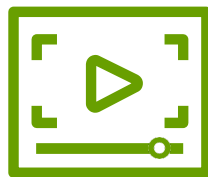
SAFR SCAN brings NIST-leading live video face recognition and video analytics features to the edge. Embedded directly into the camera, SAFR utilizes onboard compute functionality — eliminating the need for servers dedicated to processing video streams.

By eliminating server hardware, SAFR SCAN saves you on average \$500 per camera in on-premises server hardware. Leverage powerful video analytics capabilities, in real-time with dramatic reductions in total cost of ownership.



Facial Recognition

99.9% recognition accuracy per NIST



Live Video

The best solution for live video applications



Watchlist

Automated identification of persons of interest



Greater intelligence, lower TCO

- Perform key processing tasks on-camera – Face Capture and Recognition
- Reduce network bandwidth and eliminate server hardware demands
- Real-time face recognition and video analytics is now more affordable whether you deploy on one camera or hundreds

SPECIFICATIONS

Biometrics	
FAR (1:1 / 1:N)	Up to 0.0001%
Capacity	Up to 90,000 Users on Device
Operational Distance	Up to 45m (150ft)
Computer Vision	
Security	Surveillance Watchlist / Person of Interest
	Face Match and Face Search
Marketing	Age / Gender / Sentiment
Healthcare	Mask Detection
	Detection with Mask
General Electrical	
Power	PoE IEEE 802.3af Class3, DC12V
Power Consumption	DC Max 13.1W PoE Max 15.0W
Mechanical	
Dimensions	122" x 38" (310 x 97 cm)
Housing	Outdoor Bullet
Color	White
Material	Aluminum Die Casting
Weight	2.7 lbs (1.2 kg)
Light Source	IR LEDs
Environmental	
Operating Temp	-40C to +60C
Humidity	10% to 90% (non-condensing)
Storage Temp	-40F (-40C) to +140F (60C)
Vandal	IK10
IP Rating	IP67
Certifications	FCC, CE, RoHS
Network	
Ethernet	RJ45(1000Base-T(1Gbps))
Protocols	TCP/IP UDP AutoIP RTP(UDP/TCP) RTSP NTP HTTP HTTPS SSL DNS DHCP
Security	TLS, HTTPS(SSL) IP filtering 802.1x
Video Output	RTSP

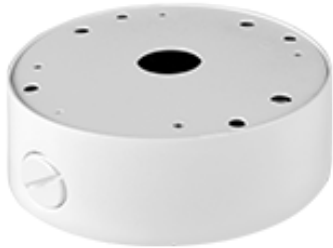
Video		
Model	SC810	SC860
Image Sensor	1 /2.8" CMOS	1 /2.8" CMOS
Max Resolution	3840(H) x 2160(V)	2592(H) x 1944(V)
Min. Illumination	Color: 0.12 Lux BW: 0 Lux IR Sensitive	Color: 0.08 Lux BW: 0 Lux IR Sensitive
Signal/Noise Ratio	50dB	
Scanning	Progressive Scan	
Compression	H.264 H.265 MJPEG	
Streaming	Triple Streaming (3rd Only MJPEG)	
Bitrate	100Kbps~25Mbps	
Events		
Audio In / Out	Mic / 1 Line	
Alarm In / Out	1 Line / 1 Line	
Image		
Shutter Speed	Auto / Manual (1/30 ~ 1/32000) Anti-Flicker Slow Shutter (1/2,1/3,1/5,1/6,1/7.5, 1/10)	
Auto Gain Control	Auto	
Day/Night	True Day/Night	
Digital Noise Reduction	3D DNR	
Wide Dynamic Range	Up to 120dB, Face Prioritization Exposure, Customizable Backlight Compensation	
IR LED	100ft (30m)	
Exposure Control	Custom, Face Priority, Scene Priority	
Function	Person Detection, Mirror and Flip	
Lens		
Model	SC810	SC860
Focal Length	6-22mm	5-50mm
Aperture	F1.6	F2.0
Lens Type	Motorized, Varifocal	
IRIS Type	P-Iris Enabled	
Angle of View	H:18.1°~49.3°, V:10.2°~24.3°	H:7.7°~46.2°, V:5.7°~34.1
Zoom	3.6x Optical	10x Optical

MODEL	DESCRIPTION
SFR-SC810	4K (8MP) PoE bullet camera with onboard AI chipset for SAFR enterprise facial recognition. SAFR License included. With motorized lens 6mm - 22mm, IR LEDs, I/O, 3-year Warranty
SFR-SC860	5MP PoE bullet camera with onboard AI chipset for SAFR enterprise facial recognition. SAFR License included. With motorized lens 5mm - 50mm, IR LEDs, I/O, 3-year Warranty

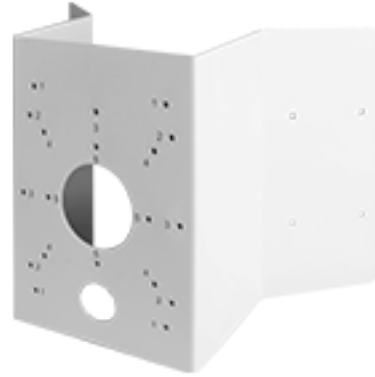


realnetworks

ACCESSORIES



SRF-CAM-JUNCTION



SRF-CAM-CORNER



SRF-CAM-POLE